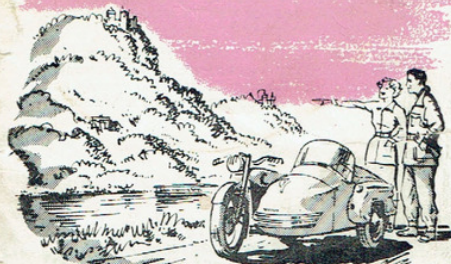




There's a

## WATSONIAN Better Value SIDECAR

to suit your needs



CURRENT MODELS

**WATSONIAN SIDECARS LTD.**

ALBION ROAD · GREET  
BIRMINGHAM 11

Telephone: VICTORIA 1987 - 1988  
Telegrams: SIDECARS, Birmingham 11.

## CAMBRIDGE Mk. III

FULL TWO SEATER

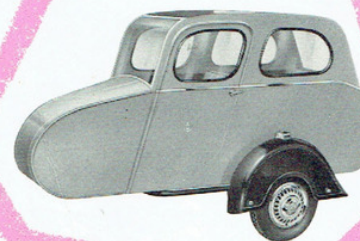


Full length sliding door  
All steel fixed head

Redesigned to provide greater width, length and height, this full two-seater sidecar with its wide full length novel sliding door now has larger seating and leg room than any other comparable model, coupled with great ease of entry and exit. The special non-rusting "spelterized" all-steel body with a fixed head incorporates large heavy gauge Cobex windows; the window on the driver's side is Perspex, and having varied openings. Seating is ample for two adults or two large children in the rear seat and an adult in the front sprung seat which hinges forward to give clear entry to the rear compartment.

Only best quality leather-cloth is used and the upholstery is in two-tone to match the duo-colour finish of the body. See page 16. The rear locker is accessible from the outside by rear opening locker lid and is provided with additional luggage carriers and bumper bar as standard specification. The model is illustrated on the SV chassis and represents the ultimate value in full two-seater sidecars.

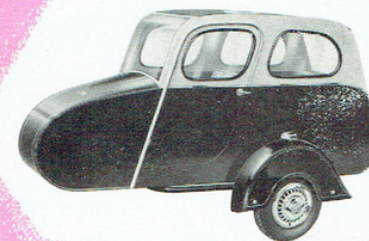
## MAXSTOKE TWO-SEATER SALOON



All steel fixed head  
Full length door

This most reasonably priced sidecar has now been redesigned to accommodate two adults. The framework of the sidecar is constructed from Marine type exterior grade 12 ply, giving exceptional strength, covered with our non-rust "spelterized" sheet steel and cellulose finished in single colours. See page 16. The steel saloon top is fitted with Cobex non-flam panels, the front offside window being Perspex and hinged to give varied openings. Also supplied is a roll back hood cover. A wide full length door together with the hinged front back rest and seat unit greatly facilitates entry and exit to the rear compartment. Both seats are fully sprung and best quality leather-cloth is used throughout. A space behind the rear seat is suitable for small parcels or tools, etc. The model is mounted on our famous SV Easifit Chassis, complete with sprung wheel and brake. The above can be supplied in any duo-colour scheme (see page 16) at £2 10s. 0d. extra (tax inclusive).

## KENILWORTH TWO-SEATER SALOON



Fixed head, ample room  
Full length door

This completely new introduction is a full two-seater suitable for accommodating two adults. Exceptional strength is afforded the framework of the sidecar which is built with 12 ply exterior grade Marine type plywood with hardwood pillars, the sidecar being completely panelled in non-rusting "spelterized" sheet steel except for the canopy portion which is covered in a metallic grey leather-cloth. Cellulose finished in single colours (see page 16), the sidecar is fitted with a large full length door and a side hinged front squab and seat allowing easy entry and exit to the rear compartment. Deeply sprung upholstery in P.V.C. is used and the canopy is fitted with heavy Cobex windows which will not discolour or crack, give excellent vision and are accommodated in special rubber patent glazing. This sidecar which is illustrated upon our SV Easifit Chassis, with sprung wheel and brake, represents exceptional value and we claim it is one of the most reasonably priced full two-seater sidecars offered today.

## WATSONIAN Better Value SIDECARS

We present to you with pride, our new comprehensive range of sidecar models, all of which are greatly advanced in design and produced by the very latest methods.

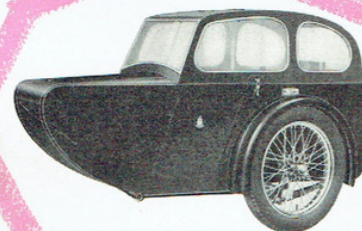
Watsonian Sidecars are not built down to a price, but up to the very highest standards and have almost fifty years of experience behind them, by careful comparison of detail specification, it will easily be recognised that, for value for money, Watsonian cannot be beaten.

Watsonians manufacture over half the sidecar chassis that are on the road today, and their popularity is due to the sound design, which has been built into them over the years, together with an after-Sales Service which is second to none.

We ask you to look carefully at our range and you will see that in the unquestionable leadership of Watsonian Sidecars there is demonstrated the full quality and value that will make you proud to be a Watsonian owner.



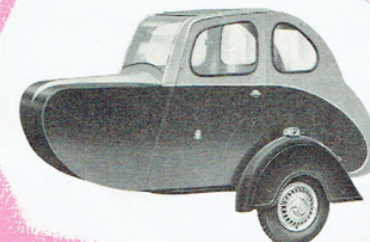
## LIGHT MAXSTOKE CHILD-ADULT SALOON



Low cost  
Non-rust steel body

This most reasonably priced sidecar has been retained to meet the needs of those requiring a well-designed and soundly-built model carrying the Watsonian high standard of finish but at a keenly competitive price. The general specification is similar to our standard Maxstoke two-seater saloon except for the saloon head which is fabric covered and hinged on the motor cycle side. A full-size fully sprung front seat gives ample leg room for a full-size adult and entry is extremely simple by means of the wide door—a child of up to 4 ft. 6 in. can be safely seated in the rear compartment and full weather protection is given by the roll top hood. The same high quality materials are used in this sidecar as in our more expensive models, and non-rust "spelterized" sheet steel is used for the body panelling, which is cellulosed in a variety of single colour schemes. See page 16. The Light Maxstoke is illustrated on our well-known and proved VG chassis.

## ASCOT SINGLE-SEATER



Wide full length door  
All steel fixed head

A special feature of this most popular single-seater is the new non-rust "spelterized" steel fixed head and the large luggage locker. Wide vision heavy gauge non-flam Cobex windows are provided, the front offside Perspex light is hinged to give varied openings. A roll top hood is provided. Full length extra wide door allows easy entry and exit, and careful attention has been paid to waterproofing and making the body completely draught proof. At the rear of the deeply sprung seat and back rest, which are upholstered in best quality leather-cloth, is a large tray for handbags, etc. Adjustable arm rests ensure complete passenger comfort. The very roomy rear locker is accessible from the outside and the hinged lid is provided with a lock and Yale type key. Cellulose is to an extremely high finish and a non-rusting finish is ensured by the use of the latest "spelterized" rust-proof steel sheet. Duo-colour schemes, listed on page 16, are available, and luggage carriers and bumper bar are fitted as standard equipment. The Ascot is illustrated on our Easyfit SV chassis.



## MONARCH

### LARGE-SINGLE SEATER

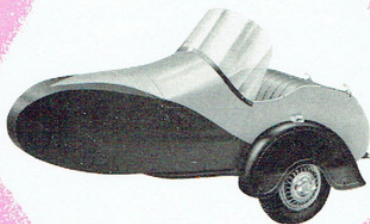


Hinged hood and screen  
Large luggage locker

Designed to meet the needs of the above-average sized persons, this sidecar is the roomiest single-seater produced today. The Monarch has a very large, deep Perspex screen incorporating long side screens on both driving and rear side. The folding hood enables the sidecar to be completely enclosed in a few seconds, and the screen, with the hood, is hinged on a sub-frame and folds on to the driving side so that the passenger can enter or leave the sidecar with the hood in the erected position. The rear view window can be rolled up to give ventilation. Extra deep upholstery with high quality finish, adjustable arm rests, glove rack and inside map pocket, ensures complete comfort. The body is steel panelled in rust-proof "spelterized" sheet steel, more durable and stronger than aluminium, and beautifully cellulosed in a variety of duo-colour schemes, see page 16, a rear opening compartment with lock and keys is suitable for three large suit-cases. Bumper bar and outside luggage carriers are fitted as standard. The Monarch model is illustrated on the SV chassis.

## AVON

### SUPER SPORTS

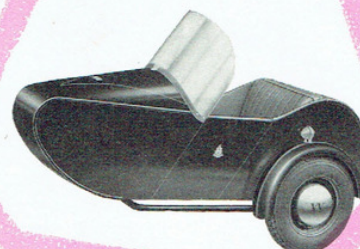


Large roomy locker  
Hinged door and dash

This sporting but elegant sidecar has an exceptionally roomy body, the long dash and door are in one piece, double hinged to give easy access. The deep Perspex screen is brought well back and eliminates the need for side screens. A smart disappearing hood which, when erected, gives headroom for an adult passenger, is neatly stowed in a separate compartment behind the rear of the seat. A most capacious rear opening compartment, fitted with lock and keys, together with large cubby hole for gloves, bags, etc., and map pocket, ensure complete comfort for the passenger within the deeply sprung upholstery and make this sidecar most attractive to both the sportsman and long distance tourist. Absolute non-rust "spelterized" sheet metal—stronger and better than aluminium—provides a perfect key for the optional two colour cellulose finish. See page 16. Also provided without extra charge are luggage carriers and rear bumper bar. The Avon is illustrated on the SV chassis complete with sprung wheel and brake, the ideal sportsman's outfit.

## MARLOW

### LIGHTWEIGHT SPORTS



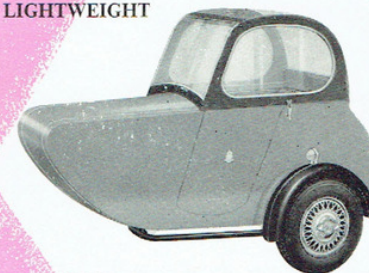
This light single seater coachbuilt sports touring sidecar is mounted on the LG chassis for fitment to motor cycles of between 200 c.c. and 500 c.c. The hardwood frame is covered with non-rust "spelterized", stronger and better than aluminium sheeting, and cellulosed in a variety of colours. See page 16. A large door allows easy entry to the interior which is fitted with deeply sprung upholstery, the rear squab being hinged to allow easy access to the generously sized rear boot. Perspex windscreen and foldaway waterproof hood gives ample head room for an adult.

#### L.G. Chassis

This medium weight chassis is of well proved design and of exceptional strength—the main front loop tube is bolted into the main axle rail and provided with four special attachment points. Fittings for most popular motor cycles of up to 500 c.c. are available. The wheel which is car type and quickly detachable is fitted with heavy Dunlop 10 in. by 3.50 tyre. This chassis has been developed from racing practice in which the small wheel has been found most suitable.

## ETON

### LIGHTWEIGHT



This very reasonably priced coachbuilt lightweight single seater saloon has extremely roomy seating and in fact has the same size deeply sprung back rest and seat as on our larger single seaters. The body being shorter and lighter obviously has not the same capacity but is ideally suited to those in need of a low priced, all weather, single-seater saloon. Constructed of high quality hardwood framing, covered in non-rust "spelterized", stronger and better than Ali-sheeting, and cellulosed in a variety of single colours, see page 16, the body will accommodate an average size adult—luggage is taken care of in the locker behind the back rest. The saloon head which is fitted with non-crack, non-flam Cobex windows has detachable hood cover, is hinged at the side, allowing together with the large door, easy entry and exit.

When fitted on our medium weight LG chassis as illustrated, the body is mounted on heavy gauge coil springs which are quite suitable for the average load for which the sidecar is designed. For further particulars of the LG chassis, see previous page. The Eton model can also be mounted on our VG chassis when required for heavier duty.

## MONOSPORT

### SPORTS TOURER

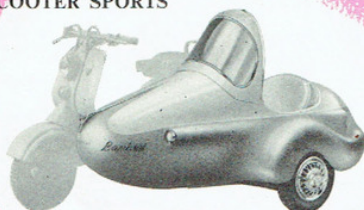


Full Monocoque chassis-less construction  
Built-in spring wheel and brake hub

Built on our famous Monocoque chassis subframe, using a 10" x 4.00 QD Brake hub wheel giving a low body position, the MonoSport is introduced to cater for the enthusiast requiring a super sports sidecar with full touring comfort built to modern construction methods. Affording a considerable saving in weight, there is no chassis or body springing as on the orthodox sidecar, aircraft tubing forms the body framework and incorporates 4 strong pickup points to the motor cycle, whilst the optional loading hydraulically sprung wheel and powerful brake ensure the ultimate comfort and safety. Non-rusting "spelterized" sheet steel is used for the panels which are highly cellulosed in a choice of popular two colour finishes. See page 16. Ample proportioned Perspex screen and foldaway hood are provided and the duo-tone best quality deeply sprung upholstery make this sidecar very attractive. A large rear opening compartment fitted with lock and keys and outside luggage grids, with rear bumper bar and a large cubby hole for gloves, bags, etc., complete the specification of this attractive and reasonably priced sidecar.

## BAMBINI

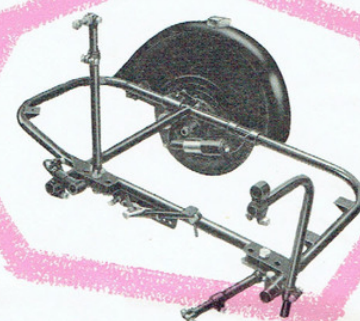
### SCOOTER SPORTS



This beautifully styled one-piece glass fibre sidecar sets a new fashion in modern design and has recently been accepted for display at the British Council of Industrial Design in London. Primarily introduced for attachment to scooters, weight has been kept to a minimum, but ample room is provided for an adult passenger. A deep spring seat and back rest, which gives access to a roomy locker and a large built-in screen together with the spring wheel, ensures complete passenger comfort. The body is cellulosed in popular scooter colours. See page 16. The patented single tube chassis, Pat. No. 26774, has a Dunlop 3.50 by 10 in. pressed wheel and tyre, adjustable for height and "toe-in" to suit most scooters. Attachment is by single point through a large rubber coupling, designed to take torsional load from the chassis and to reduce engine vibration. The spring wheel has a vertical movement of over 2 in. Full equipment includes duo-colour scheme, quickly detachable folding hood and rim embellisher. Fittings for most makes of Scooter are provided.

Selected by the Council of  
Industrial Design for display  
in The Design Centre

## SV CHASSIS "Easy Fit"



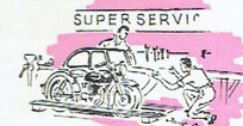
Built-in spring wheel  
With brake hub standard

This now well tried chassis is virtually the well-known Watsonian racing chassis modified to accommodate touring and sports bodies. For many years it has been accepted by the top racing drivers that a smaller sidecar wheel has many advantages and in this new chassis, which has been developed over three years of strenuous testing, all the experience of our racing sidecars has been built into an extremely robust yet light chassis.

The main one-piece loop tube is of 1 1/2 in. diameter and carries the main pivot housing which is of generous size and incorporates two sets of taper roller bearings carrying a nickel chrome spindle upon which a pivot arm is mounted. The wheel is controlled by a hydraulic shock absorber set at 15° giving a vertical wheel movement of 2 1/2 ins. The wheel hub has car size large diameter bearings with flange and four stud quickly detachable brake hub wheel, size 10 in. by 4.00. Rim embellisher is supplied as standard.

The streamlined mudguard is rubber mounted and detachable by the removal of two bolts. A glass fibre guard can be supplied at extra cost.

Robust and designed for correct and easy alignment, the four points of attachment have alternative pick up points on the chassis. A special feature is the built-in brake pedal which has universal adjustment for using independently or for coupling to the motor cycle rear brake.



## Remember

Watsonian Sidecars owe their supremacy to the fact that all designs and innovations have been developed and tested by an enthusiastic staff of practical motor cyclists, each new model being evolved through every process of test and scrutiny until they meet with entire satisfaction. In addition, keen support is given to racing and competitive events to evolve and prove new ideas for your ultimate benefit.

WATSONIAN HAVE MADE SIDECARS SINCE 1911.

## REMEMBER

The correct fitting and aligning of all chassis is carried out by our appointed dealers. You will be assured of an outfit that will handle to perfection and steer "hands off" with any of our chassis, and a free After Sales Service check, all points which go to make Watsonian the best value your money can buy. See your nearest Watsonian Dealer now.

